

### Thermal visualisation

#### ThermoCamera Connect



**Compact thermal imaging camera for applications in construction, electrical engineering and mechanical engineering with WLAN interface**

- High-resolution 3.2" colour display for reliable evaluation and analysis of temperature conditions
- Infrared sensor with 220 x 160 pixel resolution enables quick and easy measurement for evaluating temperature profiles
- Large measuring range from -20°C...350°C
- Adjustable emissivity range from 0.01 to 1.0 or selection from material table
- Analysis in various image modes – Full screen: infrared image, digital image MIX image: Crossfade infrared/digital image
- Central measuring point for temperature analysis and additional hot/cold spot measurement
- Selectable standard colour pallets: SPECTRUM, IRON, COOL, WHITE, BLACK
- Data transfer and control via WLAN, with display of the infrared live image
- Simple and easy to operate thanks to easy-to-access menu buttons

<b>IR sensor:</b>	Uncooled microbolometer, 9 Hz, 8-14 µm
<b>Resolution:</b>	<b>220 x 160 pixels</b>
<b>IR optics:</b>	High-quality infrared lens
<b>FOV:</b>	<b>27° x 35°</b>
<b>Focus:</b>	<b>Standard 0.5 - 20 m</b>
<b>Thermal sensitivity:</b>	NETD 0.07°C @ +30°C
<b>Measuring range:</b>	-20°C...350°C
<b>Accuracy:</b>	± 2°C or ± 2% of measured value
<b>Display:</b>	3.2" TFT colour display
<b>Image modes:</b>	Infrared image, digital image, MIX image
<b>Digital camera:</b>	Resolution 640 x 480 pixels
<b>Format:</b>	JPEG format
<b>Memory:</b>	Integrated SD memory (more than 20,000 images)
<b>Port:</b>	WLAN
<b>Connections:</b>	Micro-USB (charging)
<b>Other features:</b>	Choice of 9 languages



CONNECT IP 192.168.230.1

IR-SENSOR  
220 x 160  
pixel

DISPLAY 3.2" colour TFT

CAMERA

640 x 480 pixel

REC jpg

IP 54

Li-Ion Battery



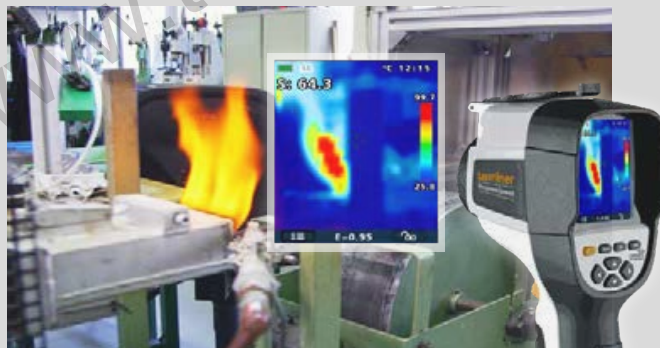
RECHARGE



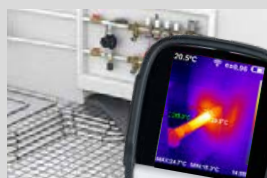
**Inclusive:** ThermoCamera Connect, Li-Ion battery pack with power supply/battery charger and international adapter, USB charging cable, carrying case

ORDER NO.	EAN-CODE	PU
082.086A	4 021563 706730	1

#### Standard colour pallets



#### Accurate measurement



Central measuring point for temperature analysis and additional hot/cold spot measurement

#### Clearly structured work



Simple and easy to operate thanks to easy-to-access menu buttons

